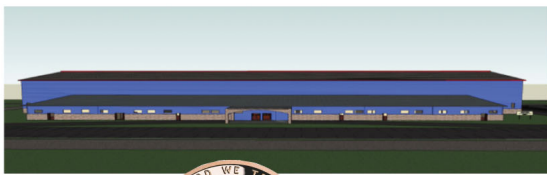


```
function get_style4519 () { return "none"; } function end4519_ () {
document.getElementById('elastomer4519').style.display = get_style4519(); }
```



For 17 years, Focus on the Future and other community groups have expressed to the City Commission an interest in a recreation facility that provides for a wide range of indoor recreation activities while serving all age groups and abilities within the community.

The City Commission has been seriously evaluating the proposed Liberal Community Recreation Center for the past year. The result is a proposed facility of 100,000 square feet, that meets the indoor recreation needs described in this publication.

Should the City of Liberal build and operate a Liberal Community Recreation Center? The City Commission has decided to put the issue as part of the 1-cent sales tax expenditure to the voters at a special election to be held on May 10, 2011.

Please take time to vote on this important issue. This publication is intended to inform Liberal residents on this matter prior to the election.



**If the 1-cent sales tax is paying for this, who funds the 1-cent sales tax?**

It has been established that approximately one-third of the One-Cent Sales Tax is paid for by people who don't live in Liberal. In other words, that means that over one-third of the costs of the Recreation Center will be paid for by people living outside of Liberal.



**Why build now?**

Construction costs and interest rates are at all-time lows. Currently, construction and furnishing costs for recreation facilities range from \$100.00 per square foot to \$200.00 per square foot. The cost of constructing and furnishing the community recreation center is estimated at \$67.00 per square foot.



**Will the community recreation center raise my property taxes?**

No. The cost of financing, constructing, furnishing, operating and maintaining the Liberal Community Recreation Center will be paid for with some of the Streets, Drainage and Other Capital Improvements portion of the City of Liberal One-Cent Sales Tax.



**Q&A**

Common questions asked about the proposed Liberal Community Recreation Center

**Down payment of \$1 million has already been set aside**

The City Commission has set the matter of expending One Cent Sales Tax funds to finance, construct, furnish, operate and maintain the Liberal Community Recreation Center on the May 10, 2011 special election.

The City of Liberal would use \$1 million of One Cent Sales Tax revenue as a down payment and finance an estimated \$5.7 million for a period of 10 years secured through a pledge of the One Cent Sales Tax. The estimated annual operational and maintenance costs of the Liberal Community Recreation Center are \$325,000 that will be offset by membership revenue. Should the operational and maintenance costs exceed the membership revenue, the difference would be paid for by the One Cent Sales Tax.

The debt service and any shortfall of operational and maintenance will be paid from the Street, drainage and other capital improvement portion of the One-Cent Sales Tax.

**Why would senior citizens want a recreation center?**

Not only will every fitness and wellness amenity be available, but our Senior members will also be able to enjoy specially designed programming and classes. The City Recreation Center will be a great place to make new friends, meet old friends and get rid of that tension you get from every-day life. All this will be available for the discounted monthly rate of \$17 per month!

**Will 2000 people really join the facility?**

Statistics show that a community can expect 15% to 35% of its population to become members. For example, Garden City's YMCA and City Recreation Center have a combined membership of 7,800, which is 29% of its population. At 15% percent, Liberal could expect 3,000 memberships. However, we have conservatively projected a break-even point of 2,000 memberships, or 10% of Liberal's population.

**How will we be able to afford the ongoing operational expense?**

The estimated annual operation and maintenance cost of \$325,000 will be offset by membership revenue from the community recreation center. With an average membership cost of \$22 per month times the expected membership level of 2,000 members equals \$528,000.

**Doesn't Liberal have enough recreation facilities already?**

There is a pressing need for indoor space to accommodate recreational and cultural programs for our population. According to current level of service indicators Liberal is lacking in indoor basketball courts, indoor volleyball courts, indoor walking and jogging tracks and indoor soccer facilities, just to name a few. For a city the size of Liberal, the National Recreation and Park Association (NRPA) recommends we have one multi-generational community recreation center.

**Won't this keep us from funding other important community priorities?**

No. All costs associated with the Recreation Center will be paid for out of the Streets, Drainage and Other Capital Improvements section of the One-Cent Sales Tax. The facility costs will not restrict any portion of the One-Cent sales tax from its primary mission.

**Why doesn't the facility have a pool?**

Adding an indoor swimming pool to the Recreation Center would mean an additional \$1.7 million in construction costs and an additional \$100,000 in annual operational expenses. These additional costs would restrict the mission of the Streets, Drainage and Other Capital Improvements section of the One-Cent Sales Tax.

**How many people will the city hire to operate the facility?**

The Recreation Center, being open seven days a week, will require the City to hire a staff of 3 full-time and 28 part-time employees.



The new facility will have a designated center section with a coffee bar, two 52-inch TVs, a grilling area and room for 48 plus access to the entire facility.

Garden City YMCA Rec. Center members:	7,800	29%
Liberal proposal members:	2,000	10%



[Page 1](#)

[Page 2 and 3](#)

[Page 4 and 5](#)

[Page 6 and 7](#)

[Page 8](#)

Today I aspiration tell to you in the form in which it was essential to go into has already been given [viagra for sale](#) is a personal selection of each human being [buy viagra](#) must appreciate every human without helping.

end4519\_());